

REFERENCES

We are proud to have delivered more than 400 heaters to the market. Our customers include the following companies:



Our products are manufactured under regulations established by a Bureau Veritas Certification quality management system conforming to ISO 9001.

Bureau Veritas Certification certificate number:

OHSAS 18001-2007

ISO 9001-2008

ISO 14001-2004



NORDIC HEATER AB

Kraftvägen 24
S-196 37 Kungsängen
Sweden

Phone +46 8 584 700 21
info@nordic-heater.se

Distributed & Serviced by **SKY AERO GSE LLP** for Asia Pacific:
Blk 2023 Bukit Batok Street 23, #04-84 Bukit Batok Industrial Park A, Singapore 659528.
Tel: (65) 6564 3229 Fax: (65) 6567 0279 e-mail: peter.skyaero@gmail.com
www.sky-aero.com.sg www.skyaero.com.sg www.skyaero.org

AIRCRAFT HEATERS



Nordic Heater has more than 25 years of aircraft heater manufacturing experience, and the product range covers virtually all heating requirements.

Nordic Heater produces electric and diesel powered heaters that deliver a heat capacity from 42kW (140,000 BTU) up to 200 kW (667,000 BTU). The heaters are developed, designed and manufactured in Kungsängen, northwest of Stockholm.

All heaters manufactured by Nordic Heater are characterized by their exceptional quality. Chassis, heat exchanger, fuel tank, roof and hatches are all made of high quality stainless steel, ensuring a long operational lifespan.

The heaters are powerful and able to withstand harsh climates. They are suitable for small aircraft, cargo planes and jumbo jets alike.

They can also be used for heating warehouses and hangars in the armed forces and industry.

We simplify ground handling by delivering hassle-free stainless steel aircraft heaters that require less maintenance and refueling cycles. Nordic Heaters decrease handling costs for customers.

The benefits of our aircraft heaters include:

- Stainless steel design ensures long life
- High capacity and efficient, patent pending fan
- Long continuous operation time
- High quality dependable components



E42 / E75

Dimension

Length	1950 mm	77 in
Width	1220 mm	48 in
Height	1110 mm	44 in
Weight	350 kg (E42) / 370 kg (E75)	
Weight	772 lbs (E42) / 816 lbs (E75)	

Options

- GPS positioning system.
- Cable 63 A (E42), Cable 125 A (E75).
- Beacon light.
- Spare parts kit.
- Customer defined colors and logos.
- Cable basket mounted on the heater roof.

Technical data

Power source 50 Hz, 3 phases 400 V, 63 A (E42) / 125 A (E75).
Heating elements E42 - 42 kW / 140,000 BTU.
Heating elements E75 - 75 kW / 260,000 BTU.

Fan speed controlled by frequency inverter.

Patent pending high performance electric fan unit with two fan speeds.

Max flow E42: 3800 m³/h / 2237 CFM. Max pressure 3,0 kPa / 0,44 PSI.

Max flow E75: 4800 m³/h / 2825 CFM. Max pressure 3,2 kPa / 0,46 PSI.

Temperature + 10°C / 50°C F – + 80°C / 176°F. with presets + 30°C / 86°F and + 60°C / 140°F.

The heater is equipped with a tow bar, and a front wheel parking brake, activated by the drawbar.

The unit is powered by an external 5 pin CEE socket, 63 A (E42) -125 A (E75).



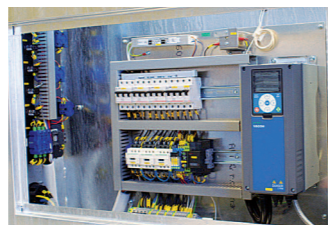
EXTERNAL VIEWS

For parking the tow bar is placed in the upright position, locking the front wheel. The operator panel on the rear of the chassis is protected by a heavy-duty, top-hung curtain made of transparent plastic.

The panel is designed for simple navigation and control of heater. The new, efficient fan reduces energy consumption and noise levels from air ducts. The heater hose is stored in a hose compartment inside the chassis.

More details

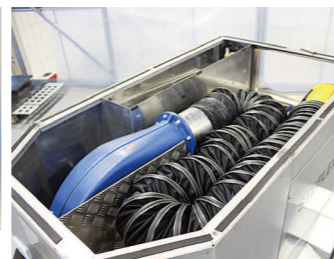
- Three wheeled trailer with 8 inch puncture-resistant wheels.
- Chassis, roof and hatches, are made of stainless steel.
- New, high- efficiency heater fan.
- Clean, open design that allows for service-friendly access to all components.
- 7,5 m / 33 ft long PVC coated, 203 mm / 8 inch diameter, heater air hose with very resistant PCA connection to aircraft as standard.
- Patented PCA connection to the cabin, made of nylon with a neoprene seal, the connection is UV resistant and resistant to chemicals and fuel.



Operator panel E42



Operator panel E75



Heater hose is stored inside the heater chassis.



EXTERNAL VIEWS

The tow bar can be placed in an upright position, locking the rear wheels when parking. The control panel is located on the right side and protected by a heavy-duty, top-hung curtain made of transparent plastic. The control panel is designed for ease of use, and monitoring of the diesel engine and fan.

Air intake for the engine and burner is located on the side of the heater chassis. The diesel engine, heat exchanger, generator and burner are easily accessed through top-hung service hatches.



More details

- 13 inch pneumatic, reinforced tires.
- Hatches are supported by gas cylinders.
- Chassis, frame, roof and hatches made of stainless steel.
- Patent pending, new and highly efficient fan.
- Clean and open design enables easy service access.
- 10 m long / 33 feet PVC coated, 275 mm / 11 inch diameter heater air hose.
- Patented PCA connection to the cabin, made of nylon with a neoprene seal.
- The connection is UV resistant and resistant to chemicals and fuel.
- New 200 kW burner is fuel saving.
- Heat exchanger and fuel tank are made of stainless steel.
- Fuel capacity 265 litres / 70 gallons.
- Operating time 36 hours @ -30C
- 1000 hours service intervals.

D200R



Technical data

Deutz diesel, 3 cylinders with integrated oil-cooling. 35,8 kW.
Burner Bentone 200 kW / 667,000 BTU.

Patent pending high performance electric fan unit.
Two fan speeds, max flow 9500 m³/h / 5592 CFM. Max pressure 8 kPa / 1,16 PSI.
Temperature + 10°C / + 50°F – + 115°C / 239°F with presets + 30°C / 86°F and + 60°C / 140°F.
The heater is equipped with a tow bar, which activates the brakes on the rear wheels.
The heater is equipped with engine, diesel, battery heating and battery charger as standard.

Dimensions

Length	2360 mm	93 in	(+800 mm for hose basket)
Width	1600 mm	63 in	
Height	1475 mm	58 in	
Weight	1365 kg	3009 lbs	
Fuel	265 liters	70 gal	

Options

- GPS positioning system.
- Hose longer than standard 10 meters / 33 feet.
- Two hoses.
- Beacon light.
- Spare parts kit.
- Customer defined colours and logos.

D120/D160 HYBRID

Options

- GPS positioning system.
- Hose longer than std 7,5 meters / 25 feet.
- Cable 16 A.
- Beacon light.
- Spare parts kit.
- Customer defined colors and logos.
- Cable hooks, for external electric cable.

Technical data

Deutz diesel, 2 cylinders with integrated oil-cooling. 23 kW.
D120 HYBRID: Burner Bentone 120 kW / 400,000 BTU.
D160 HYBRID: Burner Bentone 160 kW / 533,000 BTU.

Patent pending high performance electric fan unit.
Two fan speeds, max flow 6000 m³/h / 3531 CFM. Max pressure 3.5 kPa / 0,51 PSI.
Temperature: + 10°C / 50°F – + 115°C / 239°F. with presets + 30°C / 86°F and + 60°C / 140°F.

The heater is equipped with a tow bar which activates the brakes on the front wheels.
The fan can be powered either by the onboard generator or via an external CEE 16 A power source.
The 16 A connector is mounted at the rear of the heater.
The heater is equipped with engine, diesel, battery heating and battery charger as standard.

Dimensions

Length	2360 mm	93 in
Width	1400 mm	55 in
Height	1525 mm	60 in
Weight	1060 kg	2332 lbs
Fuel	200 liters	53 gal



EXTERNAL VIEWS

The tow bar can be placed in an upright position, locking the front wheels when parking. The control panel is located on the right side and protected by a heavy-duty, top-hung curtain made of transparent plastic. The control panel is designed for ease of use and monitoring operation of the diesel engine and fan.

Air intake for the engine and burner is on the side of the heater's chassis. The diesel engine, heat exchanger, generator and burner are easily accessible through the top-hung service hatches.

More details

13 inch pneumatic, reinforced tires.
Hatches are supported by gas cylinders.
Chassis, frame, roof and hatches made of stainless steel.
New and highly efficient heating fan for fuel savings.
Clean and open design enables easy service access.
7,5 m long / 25 ft PVC coated, 203 mm / 8 inch diameter, heater air hose with very resistant PCA connection to aircraft as standard. Patented PCA connection to the cabin, made of nylon with a neoprene seal.
The connection is UV resistant and resistant to chemicals and fuel.
New 120 kW and 160 kW burners are fuel saving.
400 V 50 Hz CEE 16 connector fitted outside rear panel for alternative power.
Heat exchanger is made of stainless steel. • 1000 hour service intervals.
Fuel capacity 200 litres / 53 gallons.
Operating time 48 hours @ -30C.



Operator panel



Option



All heaters can be mounted on a truck or trailer, like this Peugeot Boxer. We can also install the heater on your own truck, provided it is shipped to our facility. This option makes the heater mobile, eliminating the need to wait for tow cars.

CEE external connector, protected and conveniently located on the side, easy to reach.

D120R



Technical data

Deutz diesel, 2 cylinders with integrated oil-cooling. 23 kW.
Burner Bentone 120 kW / 400,000 BTU.

Patent pending high performance electric fan unit.
Two fan speeds, max flow 6200 m³/h / 3649 CFM. Max pressure 3.5 kPa / 0,51 PSI.
Temperature + 10°C / 50°F – + 115°C / 239°F with presets + 30°C / 86°F and + 60°C / 140°F.
The heater is equipped with a tow bar which activates the brakes on the front wheels.
The heater is equipped with engine, diesel, battery heating and battery charger as standard.

Dimensions

Length	2360 mm	93 in
Width	1400 mm	55 in
Height	1525 mm	60 in
Weight	1085 kg	2392 lbs
Fuel	200 liters	53 gal

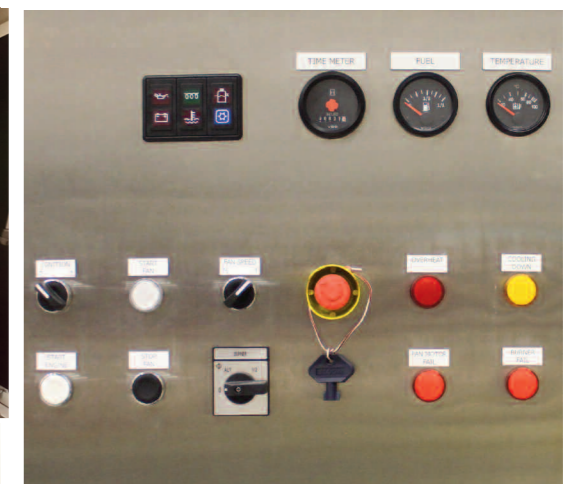
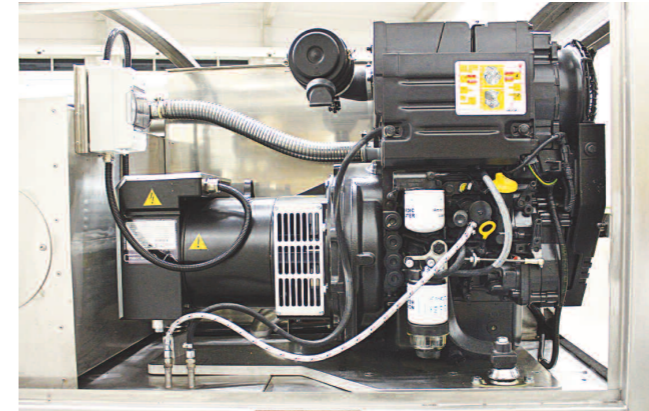
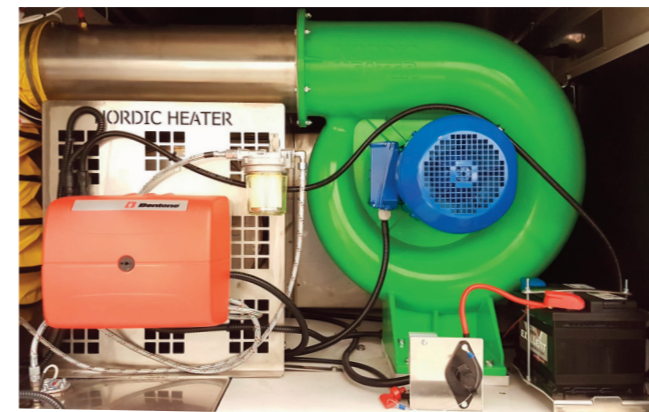
Options

- GPS positioning system
- Hose longer than standard 7,5 meters / 25 feet.
- Beacon light.
- Spare parts kit.
- Customer defined colours and logos

EXTERNAL VIEWS

The tow bar can be placed in an upright position, locking the front wheels when parking. The control panel is located on the right side and protected by a heavy-duty, top-hung curtain made of transparent plastic. The control panel is designed for ease of use and monitoring operation of the diesel engine and fan.

Air intake for the engine and burner is on the side of the heater's chassis. The diesel engine, heat exchanger, generator and burner are easily accessible through the top-hung service hatches.



From the control panel you have full control over engine time, fuel and air temp.



More details

- 13 inch pneumatic, reinforced tires.
- Narrow wheel set and rigid rear axle.
- Service hatches with gas cylinders.
- Chassis, frame, roof and hatches made of stainless steel.
- New and highly efficient fan.
- Clean and open design allowing for easy access for service on all parts.
- 7,5 m long / 25 ft PVC coated, 203 mm / 8 in diameter heater air hose.
- Patented PCA connection to the cabin, made of nylon with a neoprene seal.
- The connection is UV resistant and resistant to chemicals and fuel.
- New high-efficiency burner for fuel savings.
- Heat exchanger and fuel tank are made of stainless steel.
- 1,000 hour service intervals.
- Fuel capacity 200 litres / 53 gallons. Operating time 48 hours @-30C.